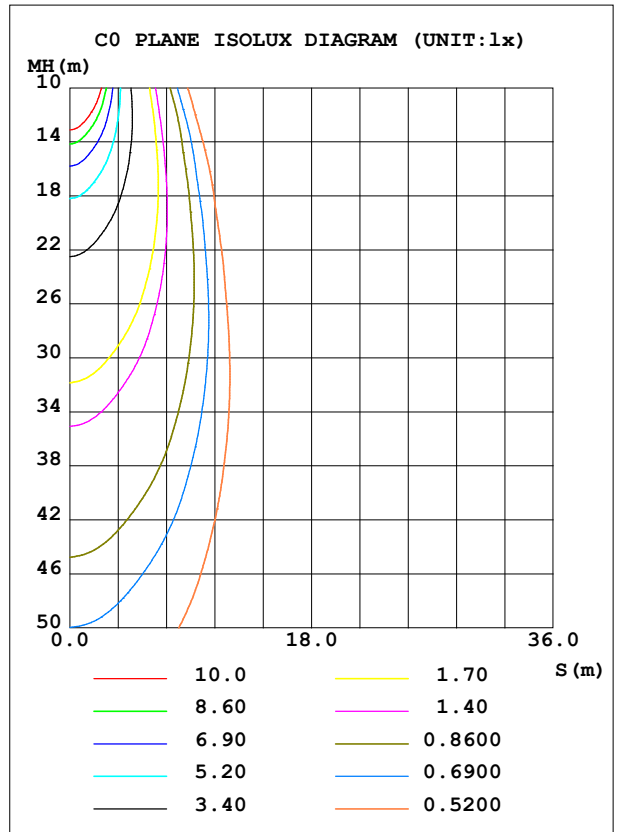
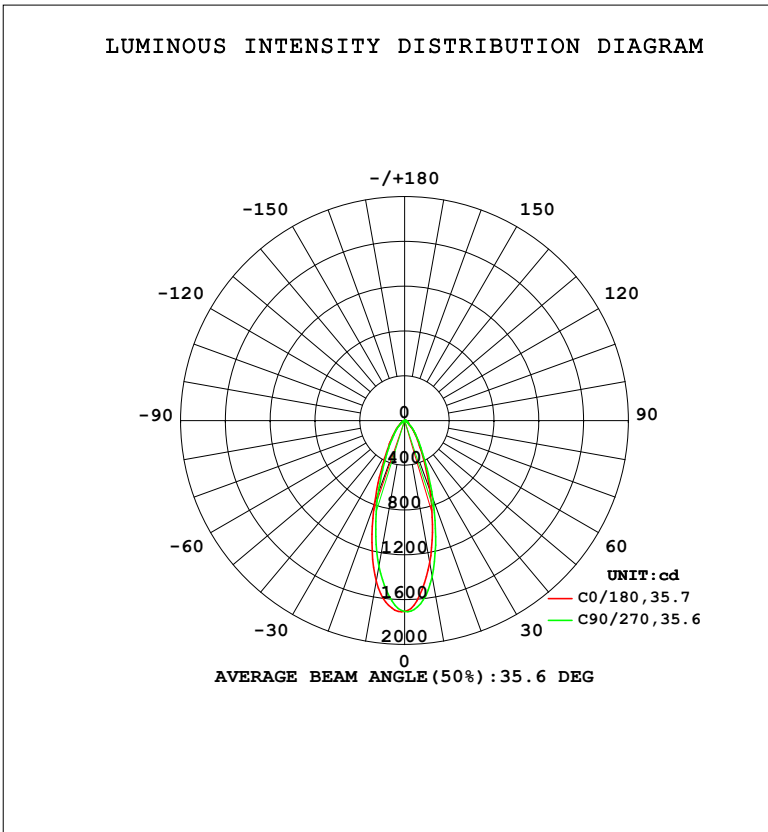


LUMINAIRE PHOTOMETRIC TEST REPORT

Test:U:120.19V I:0.0991A P:11.726W PF:0.9842 Freq:59.98Hz		
UTHDi:0.00% ITHDi:0.00% KDisp:0 Lamp Flux:912.939x1 lm		
NAME: LED-2-S11W-5CCT-WH-EY	TYPE:	WEIGHT:
SPEC.: 2700K 90	DIM.:	SERIAL No.:
MFR.: LTS	SUR.:	Shielding Angle:

DATA OF LAMP		PHOTOMETRIC DATA			
MODEL		Imax (cd)	1718	S/MH (C0/180)	0.62
NOMINAL POWER (W)	11	LOR (%)	100.0	S/MH (C90/270)	0.57
RATED VOLTAGE (V)	120	TOTAL FLUX (lm)	912.94	η UP, DN (C0-180)	0.0, 51.7
NOMINAL FLUX (lm)	912.939	CIE CLASS	DIRECT	η UP, DN (C180-360)	0.0, 48.3
LAMPS INSIDE	1	η up (%)	0.0	CIBSE SHR NOM	0.50
TEST VOLTAGE (V)	120	η down (%)	100.0	CIBSE SHR MAX	0.60



C Range: 0 - 360DEG
 C Interval: 22.5DEG
 Test Speed: HIGH
 Temperature: 24.3 °C
 Operators:
 Test Date: 2024-03-16

γ Range: 0 - 90DEG
 γ Interval: 1.0DEG
 Test System: EVERFINE GO-SPEX500_V1 SYSTEM V2.00.460
 Humidity: 65.0%
 Test Distance: 3.080m [K=1.0000]
 Remarks:

ZONAL FLUX DIAGRAM

ZONAL FLUX DIAGRAM:

γ	C0	C45	C90	C135	C180	C225	C270	C315	γ	Φ zone	Φ total	%lum,lamp
10	1291	1355	1417	1492	1462	1378	1324	1284	0- 10	146.2	146.2	16,16
20	663.7	700.0	742.5	860.6	786.1	727.3	697.7	637.3	10- 20	287.2	433.4	47.5,47.5
30	279.5	294.0	307.8	363.6	323.2	297.4	288.9	263.7	20- 30	218.4	651.8	71.4,71.4
40	132.1	139.1	144.1	159.2	146.4	136.2	132.7	124.7	30- 40	129.2	781.0	85.5,85.5
50	50.54	52.19	54.05	63.95	62.08	56.80	52.80	49.16	40- 50	73.01	854.0	93.5,93.5
60	23.84	25.20	25.96	26.66	26.44	25.10	24.34	23.67	50- 60	34.62	888.6	97.3,97.3
70	7.856	8.832	9.358	9.320	8.547	9.293	8.864	8.542	60- 70	16.34	904.9	99.1,99.1
80	2.961	3.693	4.724	3.703	3.402	3.941	4.570	3.909	70- 80	6.626	911.5	99.8,99.8
90	0.0736	0.0722	0.0837	0.0692	0.0542	0.0542	0.0652	0.0569	80- 90	1.394	912.9	100,100
100									90-100			
110									100-110			
120									110-120			
130									120-130			
140									130-140			
150									140-150			
160									150-160			
170									160-170			
180									170-180			
DEG	LUMINOUS INTENSITY:cd									UNIT:lm		

Conical surface Flux(90deg): 824.29 lm

%lum = 90.3%

%lamp = 90.3%

Conical surface Flux(130deg): 898.7 lm

%lum = 98.4%

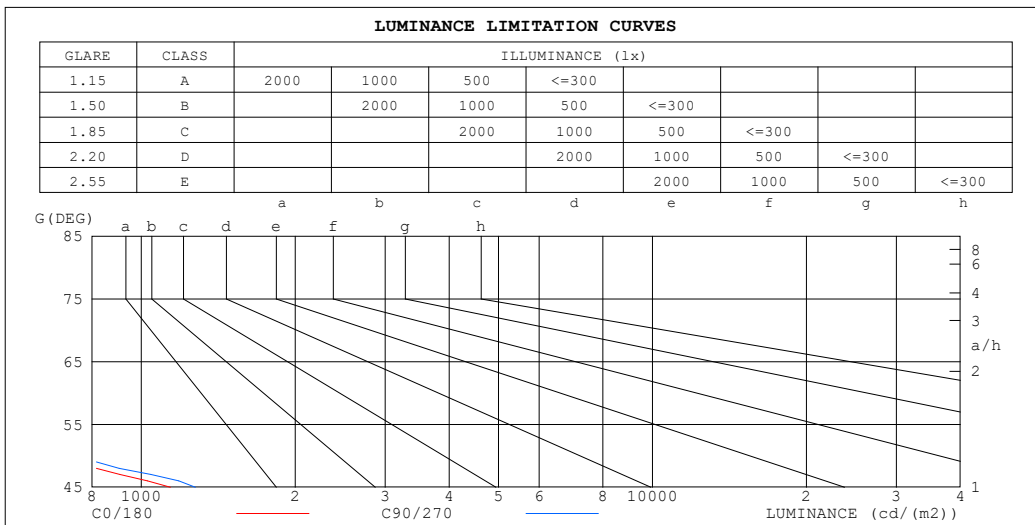
%lamp = 98.4%

C Range: 0 - 360DEG
 C Interval: 22.5DEG
 Test Speed: HIGH
 Temperature:24.3°C
 Operators:
 Test Date:2024-03-16

γ Range: 0 - 90DEG
 γ Interval: 1.0DEG
 Test System:EVERFINE GO-SPEX500_V1 SYSTEM V2.00.460
 Humidity:65.0%
 Test Distance:3.080m [K=1.0000]
 Remarks:

LUMINANCE LIMITATION CURVES

Test:U:120.19V I:0.0991A P:11.726W PF:0.9842 Freq:59.98Hz UTHDi:0.00% ITHDi:0.00% KDisp:0 Lamp Flux:912.939x1 lm		
NAME: LED-2-S11W-5CCT-WH-EY	TYPE:	WEIGHT:
SPEC.: 2700K 90	DIM.:	SERIAL No.:
MFR.: LTS	SUR.:	Shielding Angle:



LUMINANCE cd/(m2)		
G (DEG)	C0/180	C90/270
85	14	209
80	155	244
75	207	230
70	209	246
65	326	374
60	434	466
55	569	604
50	715	755
45	1139	1275

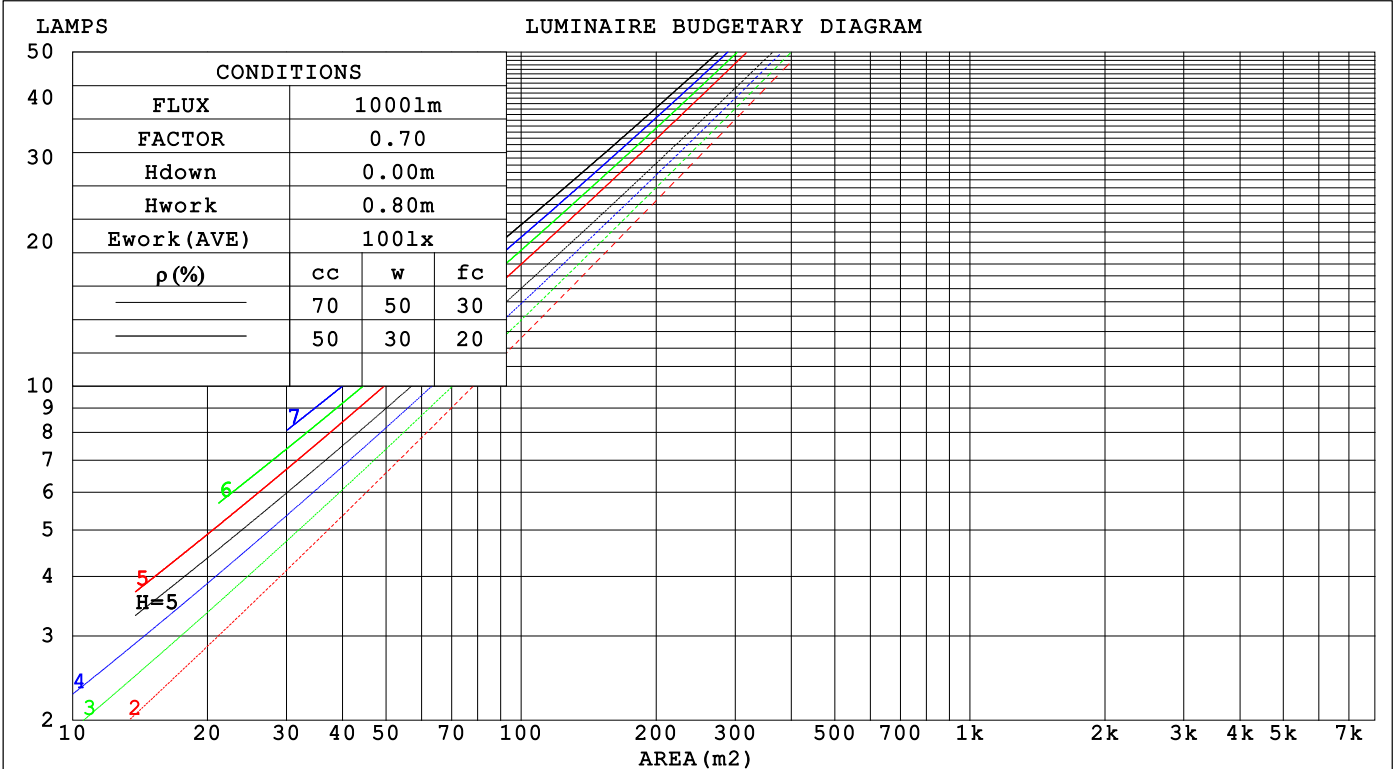
C Range: 0 - 360DEG
 C Interval: 22.5DEG
 Test Speed: HIGH
 Temperature: 24.3 °C
 Operators:
 Test Date: 2024-03-16

γ Range: 0 - 90DEG
 γ Interval: 1.0DEG
 Test System: EVERFINE GO-SPEX500_V1 SYSTEM V2.00.460
 Humidity: 65.0%
 Test Distance: 3.080m [K=1.0000]
 Remarks:

CU AND LUMINAIRE BUDGETARY ESTIMATE DIAGRAM

Test:U:120.19V I:0.0991A P:11.726W PF:0.9842 Freq:59.98Hz		
UTHdi:0.00% ITHdi:0.00% KDisp:0 Lamp Flux:912.939x1 lm		
NAME: LED-2-S11W-5CCT-WH-EY	TYPE:	WEIGHT:
SPEC.: 2700K 90	DIM.:	SERIAL No.:
MFR.: LTS	SUR.:	Shielding Angle:

ρ_{cc}	80%			70%			50%			30%			10%			0
ρ_w	50%	30%	10%	50%	30%	10%	50%	30%	10%	50%	30%	10%	50%	30%	10%	0
ρ_{fc}	20%			20%			20%			20%			20%			0
RCR	RCR:Room Cavity Ratio															
	Coefficients of Utilization(CU)															
0.0	1.19	1.19	1.19	1.16	1.16	1.16	1.11	1.11	1.11	1.06	1.06	1.06	1.02	1.02	1.02	1.00
1.0	1.10	1.08	1.06	1.08	1.06	1.04	1.04	1.02	1.01	1.01	.99	.98	.97	.96	.95	.93
2.0	1.03	.99	.95	1.01	.97	.94	.98	.95	.92	.95	.92	.90	.92	.90	.88	.86
3.0	.96	.91	.87	.94	.90	.86	.92	.88	.85	.89	.86	.83	.87	.84	.82	.80
4.0	.90	.84	.80	.88	.83	.79	.86	.82	.78	.84	.81	.77	.82	.79	.77	.75
5.0	.84	.78	.74	.83	.78	.74	.81	.77	.73	.80	.76	.72	.78	.75	.72	.70
6.0	.79	.73	.69	.79	.73	.69	.77	.72	.68	.76	.71	.68	.74	.70	.68	.66
7.0	.75	.69	.65	.74	.69	.65	.73	.68	.64	.72	.67	.64	.71	.67	.64	.62
8.0	.71	.65	.61	.70	.65	.61	.69	.64	.61	.68	.64	.61	.67	.63	.60	.59
9.0	.68	.62	.58	.67	.62	.58	.66	.61	.58	.65	.61	.57	.64	.60	.57	.56
10.0	.64	.59	.55	.64	.59	.55	.63	.58	.55	.62	.58	.55	.62	.57	.54	.53



C Range: 0 - 360DEG
 C Interval: 22.5DEG
 Test Speed: HIGH
 Temperature:24.3 °C
 Operators:
 Test Date:2024-03-16

γ Range: 0 - 90DEG
 γ Interval: 1.0DEG
 Test System:EVERFINE GO-SPEX500_V1 SYSTEM V2.00.460
 Humidity:65.0%
 Test Distance:3.080m [K=1.0000]
 Remarks:

WEC AND CCEC

Test:U:120.19V I:0.0991A P:11.726W PF:0.9842 Freq:59.98Hz		
UTHDi:0.00% ITHDi:0.00% KDisp:0 Lamp Flux:912.939x1 lm		
NAME: LED-2-S11W-5CCT-WH-EY	TYPE:	WEIGHT:
SPEC.: 2700K 90	DIM.:	SERIAL No.:
MFR.: LTS	SUR.:	Shielding Angle:

ρ_{CC}	80%			70%			50%			30%			10%			0
ρ_w	50%	30%	10%	50%	30%	10%	50%	30%	10%	50%	30%	10%	50%	30%	10%	0
ρ_{fc}	20%			20%			20%			20%			20%			0
RCR	RCR:Room Cavity Ratio						Wall Exitance Coefficients(WEC)									
0.0																
1.0	.183	.104	.033	.176	.101	.032	.164	.094	.030	.152	.088	.028	.141	.082	.026	
2.0	.175	.096	.029	.169	.093	.029	.158	.088	.027	.148	.083	.026	.139	.079	.025	
3.0	.165	.088	.026	.160	.086	.026	.151	.082	.025	.143	.078	.024	.135	.075	.023	
4.0	.156	.081	.024	.152	.080	.024	.144	.076	.023	.137	.074	.022	.130	.071	.022	
5.0	.148	.075	.022	.144	.074	.022	.137	.072	.021	.131	.069	.021	.125	.067	.020	
6.0	.140	.070	.020	.137	.069	.020	.131	.067	.020	.125	.065	.019	.120	.063	.019	
7.0	.133	.066	.019	.130	.065	.019	.125	.063	.018	.120	.062	.018	.115	.060	.018	
8.0	.127	.062	.017	.124	.061	.017	.120	.060	.017	.115	.058	.017	.111	.057	.017	
9.0	.121	.058	.016	.119	.058	.016	.114	.057	.016	.110	.055	.016	.107	.054	.016	
10.0	.115	.055	.015	.113	.055	.015	.110	.054	.015	.106	.053	.015	.103	.052	.015	

ρ_{CC}	80%			70%			50%			30%			10%			0
ρ_w	50%	30%	10%	50%	30%	10%	50%	30%	10%	50%	30%	10%	50%	30%	10%	0
ρ_{fc}	20%			20%			20%			20%			20%			0
RCR	RCR:Room Cavity Ratio						Ceiling Cavity Exitance Coefficients(CCEC)									
0.0	.190	.190	.190	.163	.163	.163	.111	.111	.111	.064	.064	.064	.020	.020	.020	
1.0	.172	.157	.144	.147	.135	.124	.100	.093	.086	.058	.054	.050	.019	.017	.016	
2.0	.157	.132	.112	.134	.114	.097	.092	.079	.068	.053	.046	.040	.017	.015	.013	
3.0	.144	.114	.089	.124	.098	.077	.085	.068	.054	.049	.040	.032	.016	.013	.010	
4.0	.134	.099	.072	.115	.085	.063	.079	.060	.044	.046	.035	.026	.015	.011	.009	
5.0	.125	.087	.059	.107	.076	.052	.074	.053	.037	.043	.031	.022	.014	.010	.007	
6.0	.117	.078	.050	.101	.068	.043	.070	.047	.031	.040	.028	.018	.013	.009	.006	
7.0	.111	.070	.042	.095	.061	.037	.066	.043	.026	.038	.025	.016	.012	.008	.005	
8.0	.105	.064	.036	.090	.056	.032	.062	.039	.022	.036	.023	.013	.012	.008	.004	
9.0	.099	.059	.031	.086	.051	.027	.059	.036	.019	.035	.021	.012	.011	.007	.004	
10.0	.094	.054	.028	.081	.047	.024	.057	.033	.017	.033	.020	.010	.011	.006	.003	

C Range: 0 - 360DEG
 C Interval: 22.5DEG
 Test Speed: HIGH
 Temperature:24.3°C
 Operators:
 Test Date:2024-03-16

γ Range: 0 - 90DEG
 γ Interval: 1.0DEG
 Test System:EVERFINE GO-SPEX500_V1 SYSTEM V2.00.460
 Humidity:65.0%
 Test Distance:3.080m [K=1.0000]
 Remarks:

UGR(Unified Glare Rating) Table

Test:U:120.19V I:0.0991A P:11.726W PF:0.9842 Freq:59.98Hz UTHDi:0.00% ITHDi:0.00% KDisp:0 Lamp Flux:912.939x1 lm		
NAME: LED-2-S11W-5CCT-WH-EY	TYPE:	WEIGHT:
SPEC.: 2700K 90	DIM.:	SERIAL No.:
MFR.: LTS	SUR.:	Shielding Angle:

ceiling/cavity	0.7	0.7	0.5	0.5	0.3	0.7	0.7	0.5	0.5	0.3
walls	0.5	0.3	0.5	0.3	0.3	0.5	0.3	0.5	0.3	0.3
working plane	0.2	0.2	0.2	0.2	0.2	0.2	0.2	0.2	0.2	0.2

Room dimensions	Viewed crosswise					Viewed endwise				
x = 2H y = 2H	8.2	9.2	8.5	9.3	9.5	8.5	9.4	8.7	9.6	9.8
3H	8.3	9.2	8.6	9.4	9.6	8.7	9.5	8.9	9.7	9.9
4H	8.4	9.2	8.6	9.4	9.6	8.7	9.5	9.0	9.8	10.0
6H	8.4	9.1	8.7	9.4	9.6	8.8	9.5	9.1	9.8	10.0
8H	8.3	9.1	8.7	9.3	9.6	8.8	9.5	9.1	9.8	10.1
12H	8.3	9.0	8.6	9.3	9.6	8.8	9.5	9.1	9.8	10.1
4H 2H	8.3	9.1	8.5	9.3	9.5	8.5	9.3	8.8	9.6	9.8
3H	8.4	9.2	8.8	9.4	9.7	8.7	9.5	9.1	9.7	10.0
4H	8.5	9.2	8.9	9.5	9.8	8.8	9.5	9.2	9.8	10.1
6H	8.6	9.2	9.0	9.5	9.8	9.0	9.6	9.4	9.9	10.2
8H	8.6	9.1	8.9	9.4	9.8	9.0	9.6	9.4	9.9	10.3
12H	8.5	9.0	8.9	9.4	9.8	9.1	9.6	9.5	9.9	10.3
8H 4H	8.5	9.0	8.9	9.4	9.7	8.8	9.3	9.2	9.7	10.1
6H	8.6	9.0	9.0	9.4	9.8	9.0	9.5	9.4	9.8	10.3
8H	8.6	9.0	9.0	9.4	9.8	9.1	9.5	9.6	9.9	10.3
12H	8.5	8.9	9.0	9.3	9.8	9.2	9.5	9.6	9.9	10.4
12H 4H	8.5	8.9	8.9	9.3	9.7	8.8	9.3	9.2	9.6	10.0
6H	8.6	9.0	9.0	9.4	9.8	9.0	9.4	9.4	9.8	10.2
8H	8.6	8.9	9.0	9.3	9.8	9.1	9.4	9.6	9.9	10.3

Variations with the observer position at spacings(CIE Pub.117):		
S = 1.0H	+ 1.3 / - 2.2	+ 1.2 / - 1.9
1.5H	+ 1.8 / - 1.5	+ 1.9 / - 1.5
2.0H	+ 2.7 / - 1.7	+ 2.9 / - 1.5

CIE Pub.117, 912.9 lm Total Lamp Luminous Flux Correct (8log(F/F0) = -0.3)
 Area: 0.111111 m2

C Range: 0 - 360DEG
 C Interval: 22.5DEG
 Test Speed: HIGH
 Temperature:24.3°C
 Operators:
 Test Date:2024-03-16

γ Range: 0 - 90DEG
 γ Interval: 1.0DEG
 Test System:EVERFINE GO-SPEX500_V1 SYSTEM V2.00.460
 Humidity:65.0%
 Test Distance:3.080m [K=1.0000]
 Remarks:

UTILIZATION FACTORS TABLE

Test:U:120.19V I:0.0991A P:11.726W PF:0.9842 Freq:59.98Hz UTHDi:0.00% ITHDi:0.00% KDisp:0 Lamp Flux:912.939x1 lm		
NAME: LED-2-S11W-5CCT-WH-EY	TYPE:	WEIGHT:
SPEC.: 2700K 90	DIM.:	SERIAL No.:
MFR.: LTS	SUR.:	Shielding Angle:

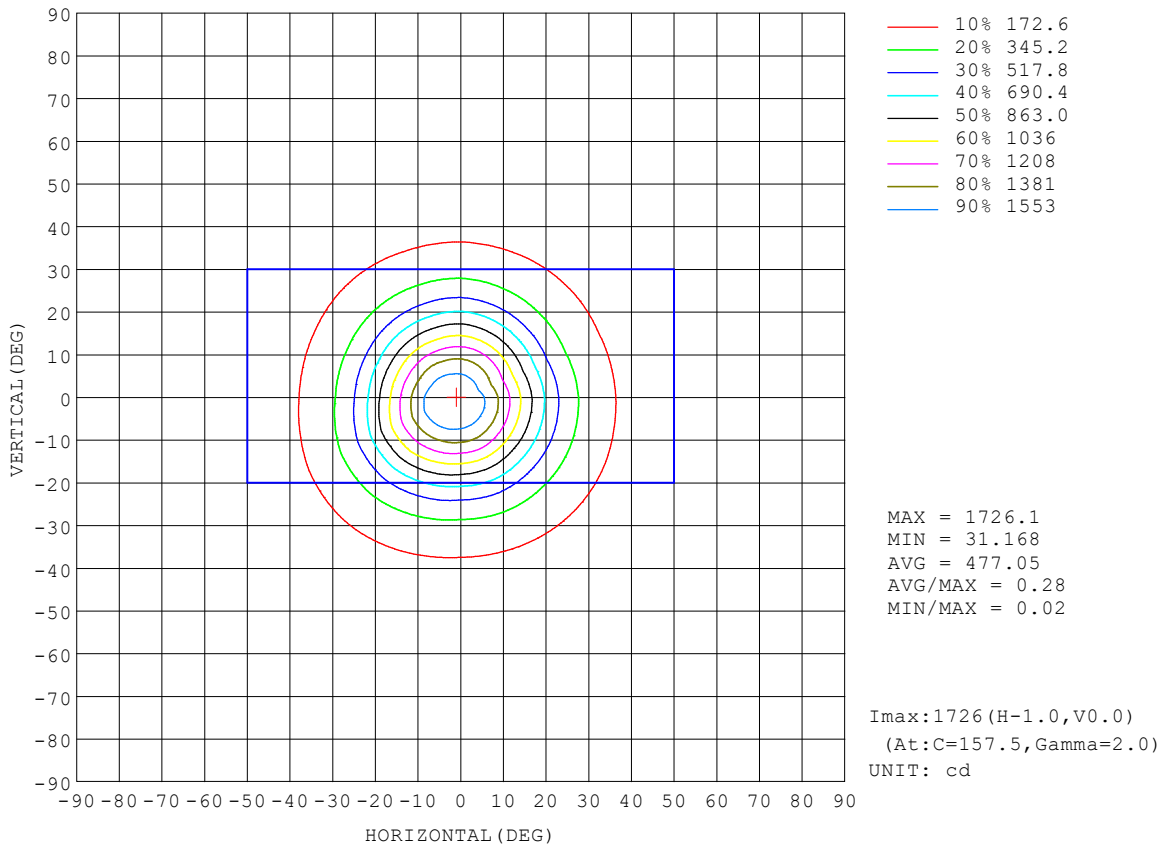
REFLECTANCE										
Ceiling	0.8	0.8	0.8	0.7	0.7	0.7	0.5	0.5	0.5	0
Walls	0.7	0.5	0.3	0.7	0.5	0.3	0.7	0.5	0.3	0
Working plane	0.2	0.2	0.2	0.2	0.2	0.2	0.2	0.2	0.2	0
ROOM INDEX	UTILIZATION FACTORS (PERCENT) $k(RI) \times RCR = 5$									
$k = 0.60$	82	75	71	82	75	71	81	75	71	67
0.80	90	84	79	90	83	79	88	83	79	75
1.00	96	89	85	95	89	85	93	89	84	80
1.25	100	94	90	99	94	90	97	93	89	85
1.50	103	98	94	102	97	94	100	96	93	88
2.00	107	102	98	105	101	98	103	99	96	91
2.50	109	104	101	107	103	100	104	101	98	92
3.00	111	107	104	109	105	103	105	103	100	94
4.00	113	110	107	111	108	106	107	105	103	96
5.00	114	112	109	112	110	108	108	106	105	97
ROOM INDEX	UF(total)									Direct
According to DIN EN 13032-2 2004			Suspended				SHRNOM = 1.25			

C Range: 0 - 360DEG
 C Interval: 22.5DEG
 Test Speed: HIGH
 Temperature: 24.3°C
 Operators:
 Test Date: 2024-03-16

γ Range: 0 - 90DEG
 γ Interval: 1.0DEG
 Test System: EVERFINE GO-SPEX500_V1 SYSTEM V2.00.460
 Humidity: 65.0%
 Test Distance: 3.080m [K=1.0000]
 Remarks:

ISOCANDELA DIAGRAM

Test:U:120.19V I:0.0991A P:11.726W PF:0.9842 Freq:59.98Hz UTHDi:0.00% ITHDi:0.00% KDisp:0 Lamp Flux:912.939x1 lm		
NAME: LED-2-S11W-5CCT-WH-EY	TYPE:	WEIGHT:
SPEC.: 2700K 90	DIM.:	SERIAL No.:
MFR.: LTS	SUR.:	Shielding Angle:

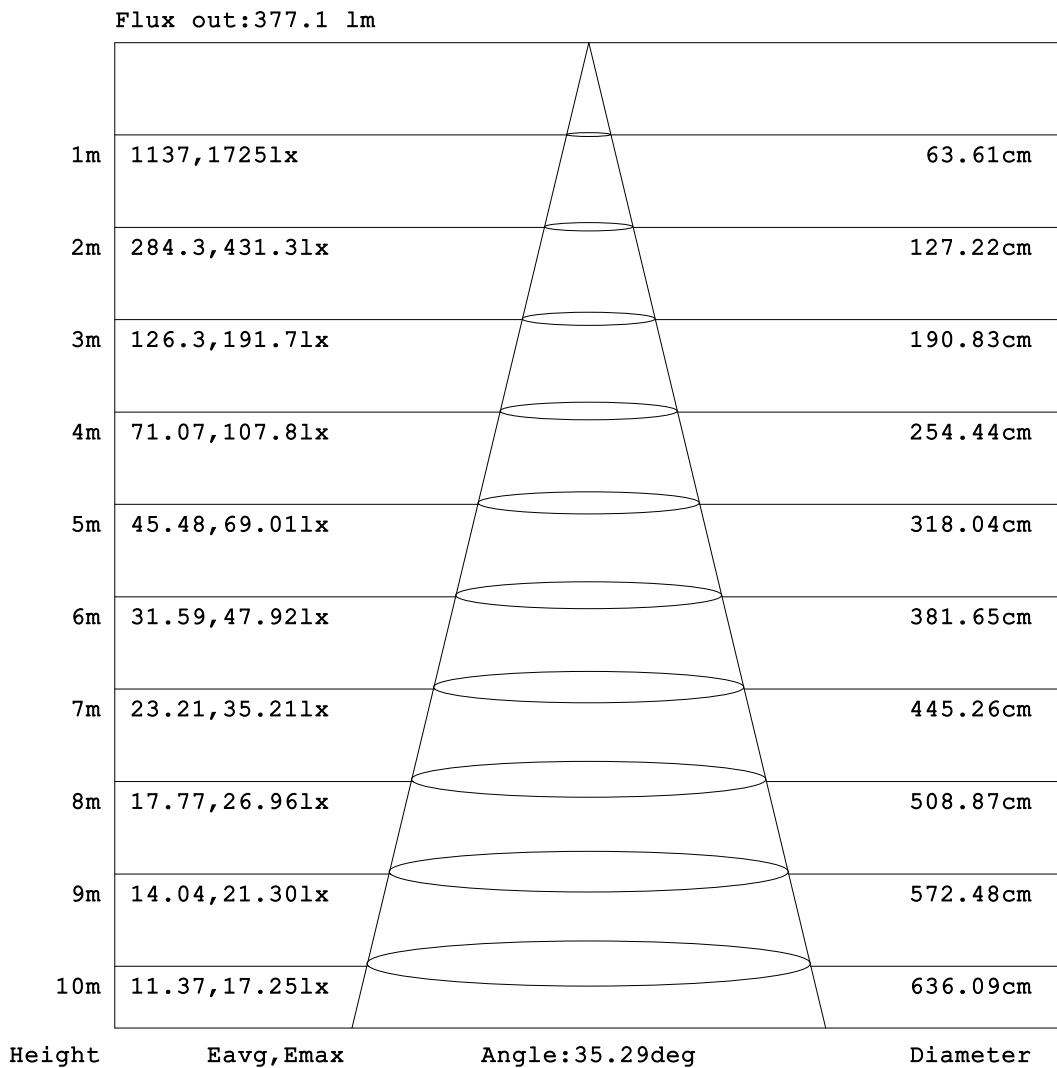


C Range: 0 - 360DEG
 C Interval: 22.5DEG
 Test Speed: HIGH
 Temperature:24.3°C
 Operators:
 Test Date:2024-03-16

γ Range: 0 - 90DEG
 γ Interval: 1.0DEG
 Test System:EVERFINE GO-SPEX500_V1 SYSTEM V2.00.460
 Humidity:65.0%
 Test Distance:3.080m [K=1.0000]
 Remarks:

AAI Figure

Test:U:120.19V I:0.0991A P:11.726W PF:0.9842 Freq:59.98Hz UTHDi:0.00% ITHDi:0.00% KDisp:0 Lamp Flux:912.939x1 lm		
NAME: LED-2-S11W-5CCT-WH-EY	TYPE:	WEIGHT:
SPEC.: 2700K 90	DIM.:	SERIAL No.:
MFR.: LTS	SUR.:	Shielding Angle:



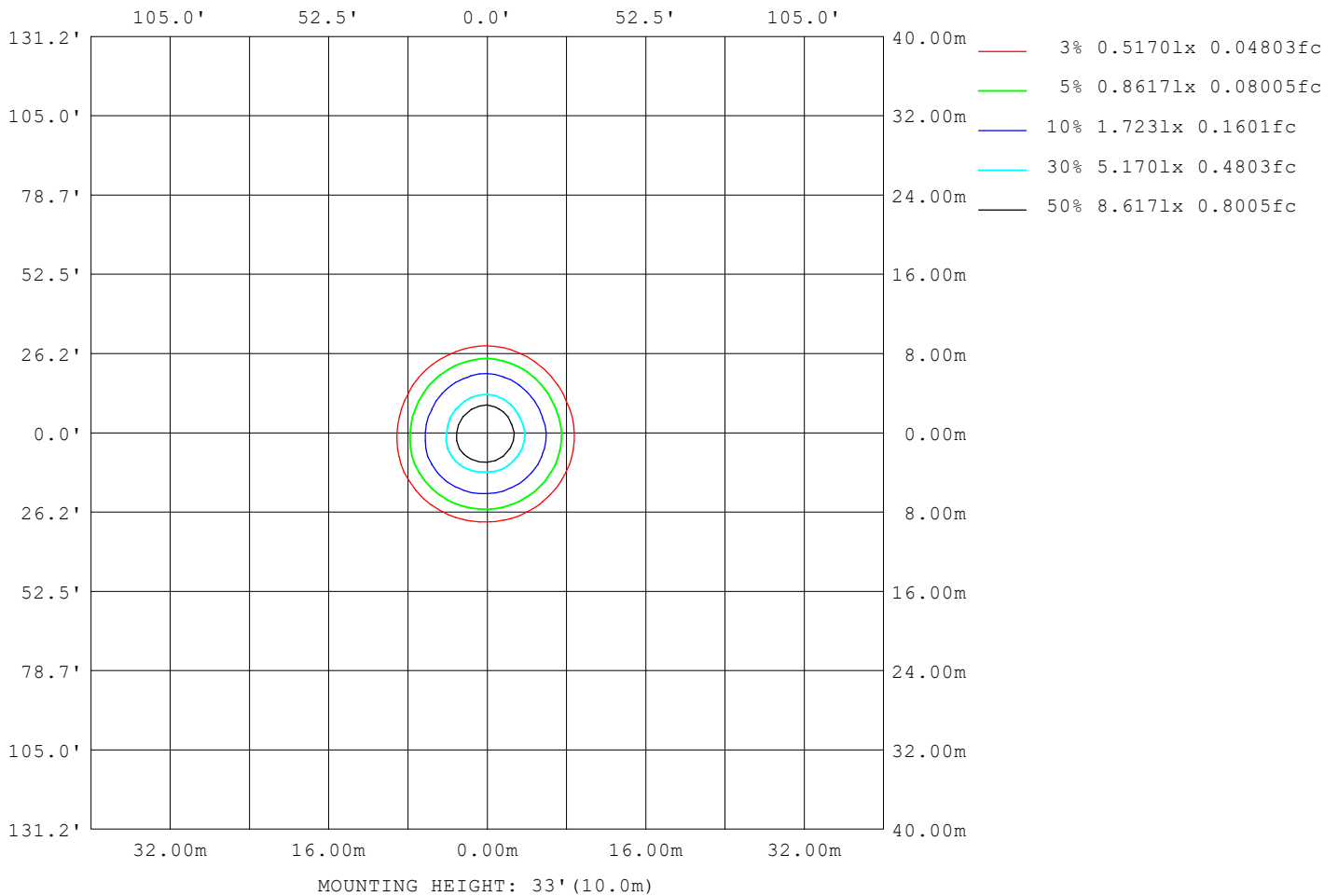
Note:The Curves indicate the illuminated area and the average illumination when the luminaire is at different distance.

C Range: 0 - 360DEG
 C Interval: 22.5DEG
 Test Speed: HIGH
 Temperature:24.3 °C
 Operators:
 Test Date:2024-03-16

γ Range: 0 - 90DEG
 γ Interval: 1.0DEG
 Test System:EVERFINE GO-SPEX500_V1 SYSTEM V2.00.460
 Humidity:65.0%
 Test Distance:3.080m [K=1.0000]
 Remarks:

ISOLUX DIAGRAM

Test:U:120.19V I:0.0991A P:11.726W PF:0.9842 Freq:59.98Hz UTHDi:0.00% ITHDi:0.00% KDisp:0 Lamp Flux:912.939x1 lm		
NAME: LED-2-S11W-5CCT-WH-EY	TYPE:	WEIGHT:
SPEC.: 2700K 90	DIM.:	SERIAL No.:
MFR.: LTS	SUR.:	Shielding Angle:



C Range: 0 - 360DEG
 C Interval: 22.5DEG
 Test Speed: HIGH
 Temperature: 24.3°C
 Operators:
 Test Date: 2024-03-16

γ Range: 0 - 90DEG
 γ Interval: 1.0DEG
 Test System: EVERFINE GO-SPEX500_V1 SYSTEM V2.00.460
 Humidity: 65.0%
 Test Distance: 3.080m [K=1.0000]
 Remarks:

LED Avg.L Report

Test:U:120.19V I:0.0991A P:11.726W PF:0.9842 Freq:59.98Hz UTHDi:0.00% ITHDi:0.00% KDisp:0 Lamp Flux:912.939x1 lm		
NAME: LED-2-S11W-5CCT-WH-EY	TYPE:	WEIGHT:
SPEC.: 2700K 90	DIM.:	SERIAL No.:
MFR.: LTS	SUR.:	Shielding Angle:

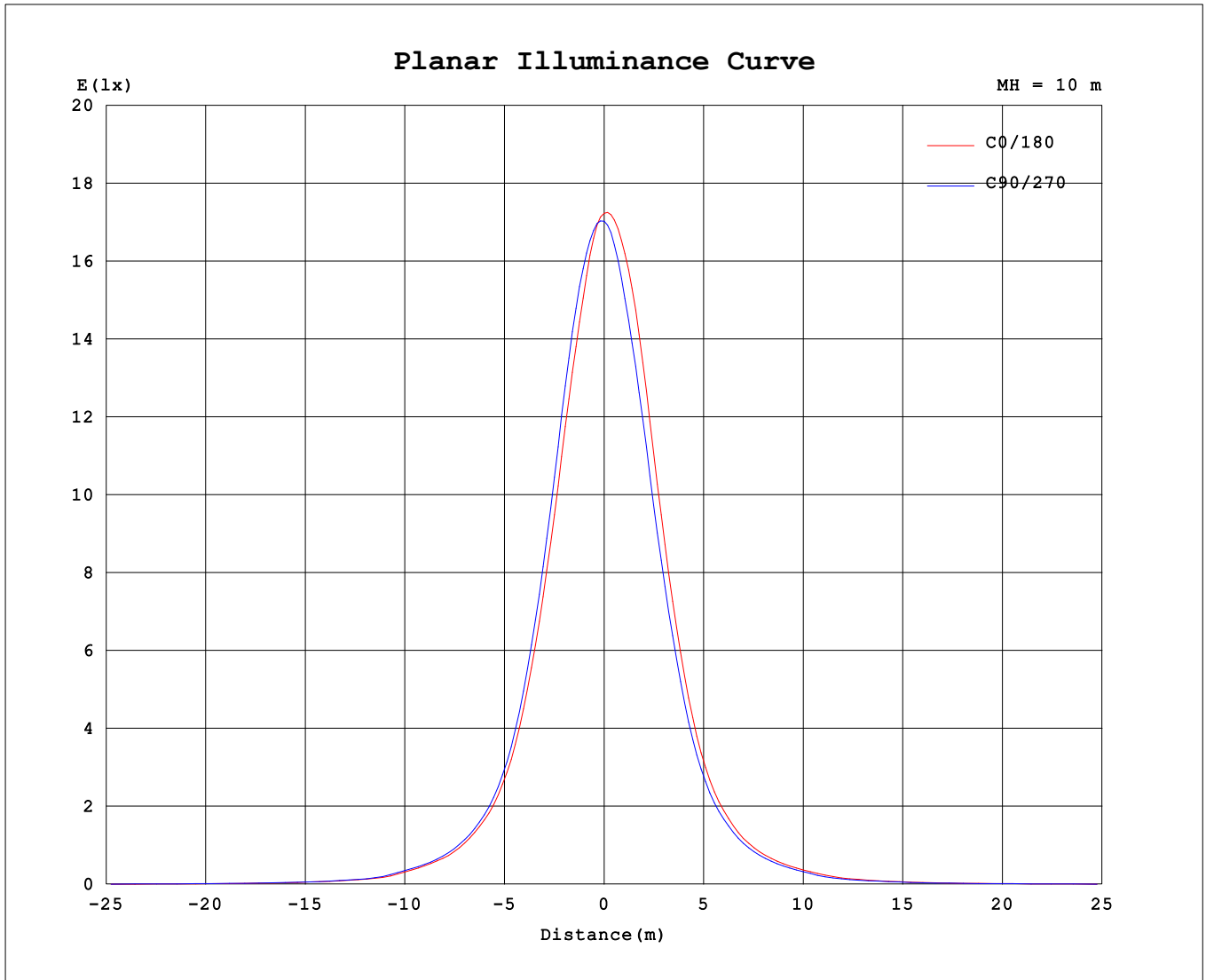
AvgL	cd/m2
L_0~180 (65) av	341
L_0~180 (75) av	211
L_0~180 (85) av	24
L_90~270 (65) av	359
L_90~270 (75) av	232
L_90~270 (85) av	192
L_45 (65) av	354
L_45 (75) av	223
L_45 (85) av	57

Standard: GB/T 29293-2012

C Range: 0 - 360DEG
 C Interval: 22.5DEG
 Test Speed: HIGH
 Temperature:24.3℃
 Operators:
 Test Date:2024-03-16

γ Range: 0 - 90DEG
 γ Interval: 1.0DEG
 Test System:EVERFINE GO-SPEX500_V1 SYSTEM V2.00.460
 Humidity:65.0%
 Test Distance:3.080m [K=1.0000]
 Remarks:

Planar Illuminance Curve



C Range: 0 - 360DEG
 C Interval: 22.5DEG
 Test Speed: HIGH
 Temperature: 24.3 °C
 Operators:
 Test Date: 2024-03-16

γ Range: 0 - 90DEG
 γ Interval: 1.0DEG
 Test System: EVERFINE GO-SPEX500_V1 SYSTEM V2.00.460
 Humidity: 65.0%
 Test Distance: 3.080m [K=1.0000]
 Remarks:

